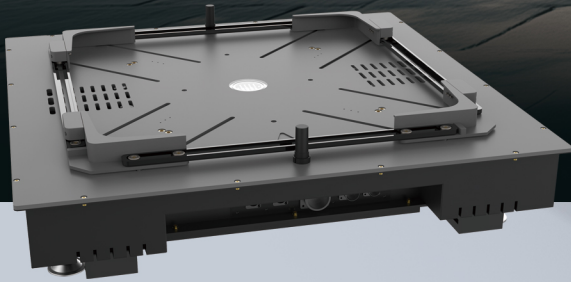


# Mobile Drone Station **PORTUS-M+**

## Vehicle-Mounted Station **PORTUS-M+**

PORTUS-M is a mobile drone station mounted on a vehicle, designed to allow a drone to take off, land, recharge, and continue missions automatically – even while the vehicle is moving.



## What is **PORTUS-M+**



### Vehicle-Mounted Mobility

Operate drones directly from a moving vehicle, delivering real-time aerial support during convoys, patrols, and rapid field deployments.



### Automatic Takeoff & Landing

PORTUS-M enables fully automated takeoff and landing even while the vehicle is in motion performance successfully verified at 10 km/h Precision-guided landing technology ensures safe, reliable recovery under vehicle vibration, road movement, and challenging environmental conditions.



### Auto-Charging for Continuous Missions

The integrated charging module restores the drone's battery in less than 50 minutes, enabling continuous mission cycles without manual battery replacement



### Follow-Vehicle Function

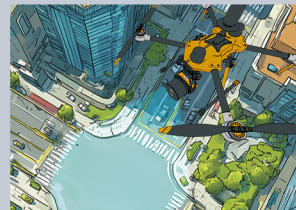
Drone autonomously tracks the vehicle's movement from above, maintaining optimal viewing positions throughout tactical or inspection missions.

## Use case **PORTUS-M+**



### Military operations

Mapping and managing construction sites



### Police & security forces

Mapping and managing construction sites



### Emergency response

Mapping and managing construction sites



### Mobile inspection missions

Mapping and managing construction sites

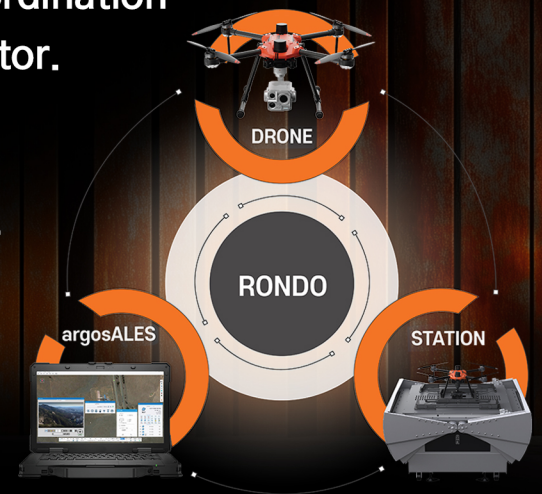
# PORTUS-M+ Advanced Control System

This system ensures stable and intelligent coordination between the drone, the station, and the operator.

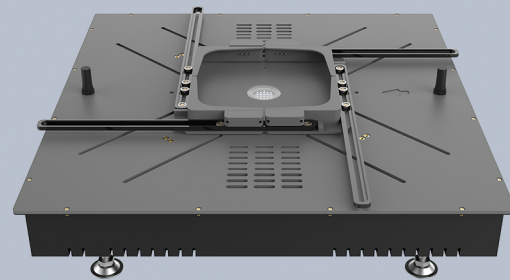
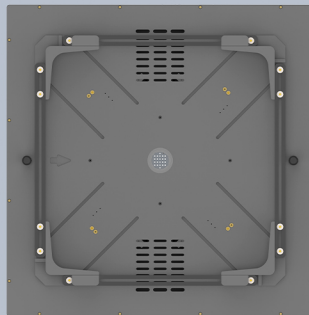
## argosALES GCS Platform

Integrated with the **argosALES**-based remote control system,

- Secure remote drone operation
- Automated mission execution
- Real-time status monitoring
- Reliable command transmission over RF and LTE



## Technical Specifications



### Station

### Specification

Station Size	895 × 880 × 145 mm
Station Weight	23 kg
Charging Time	Less than 50 minutes
Charging Cycles Supported	Up to 10 recharges for the drone
Power Input	Dedicated vehicle-mounted power supply (DC)
Operation Temperature	-10- 50°C

### Battery Pack

### Specification

Battery Pack Size	395 × 940 × 110 mm
Battery Pack Weight	26 kg
Battery Type	Li-ion Battery (8S, 33.6V, 30A) × 4